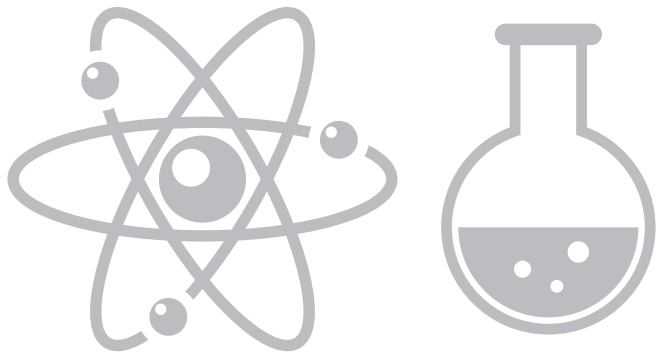
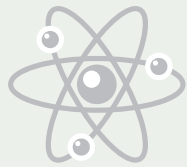


SCIENCE LAB





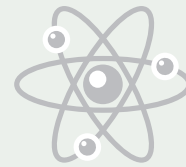
SCIENCE LAB



Welcome to the 'Anglesea Estuary Outdoor Science Lab'. When the water quality in the estuary is compromised, so is its food supply. You have been provided with tools and equipment to assess water depth and to catch and identify as many macro-invertebrates as possible in the given time. The amount of macro-invertebrates in the water directly relates to its health and therefore the health of the whole estuary ecosystem. Please look at page 3 of your newsletter for more information.

GOOD LUCK TEAM!!!

You have 20 mins to complete this task.



SCIENCE LAB



Welcome to the 'Anglesea Estuary Outdoor Science Lab'. When the water quality in the estuary is compromised, so is its food supply. You have been provided with tools and equipment to assess water depth and to catch and identify as many macro-invertebrates as possible in the given time. The amount of macro-invertebrates in the water directly relates to its health and therefore the health of the whole estuary ecosystem. Please look at page 3 of your newsletter for more information.

GOOD LUCK TEAM!!!

You have 20 mins to complete this task.

